



Similac Sensitive Lactose-Free



Babies

can have sensitive tummies

**Which is why Similac Sensitive
Lactose-Free is uniquely formulated
for infants with:**

**fussiness*, gas*, diarrhea* and other
intolerance problems.**

*Due to lactose intolerance



Abbott

A Promise for Life

Similac Sensitive LACTOSE-FREE



For fussiness*, gas*, diarrhea* and other intolerance problems.

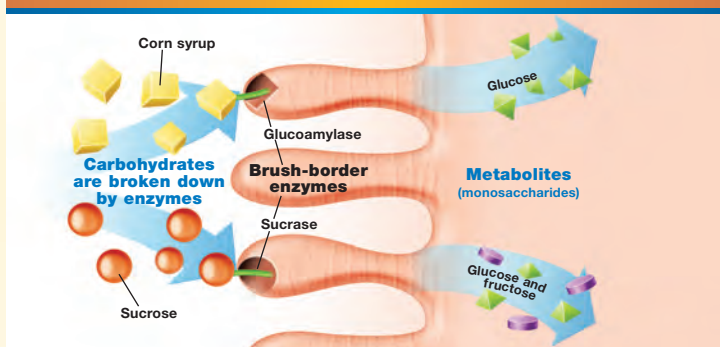
*Due to lactose intolerance

Easy to digest

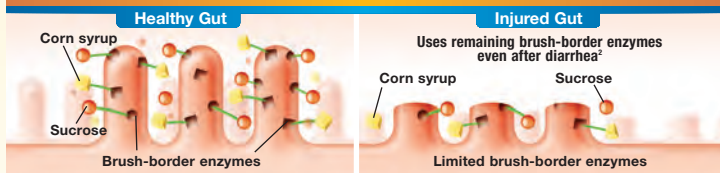
Similac Sensitive Lactose-Free has a unique dual carbohydrate system for better absorption¹

Dual Carbohydrate System

Dual Carbohydrate Metabolisation



Post-diarrhea Dual Carbohydrate Absorption



Supports the normal development of babies' immune systems

Nucleotide level 72 mg/L is similar to that available in breast milk (TPAN)^{†3,4}

†TPAN: Total potentially available nucleosides

References: 1. Kerzner D, Slavina HR, McClung HJ, Cardano D. Jejunal absorption of sucrose (S) and glucose oligomers (GO) in the absence of pancreatic amylase (PA). *Pediatr Res* 1983;17:191A. 2. Santosham M, Foster S, Reid R, et al. Role of soy-based lactose-free formula during treatment of acute diarrhea. *Pediatrics* 1985;76:292-8. 3. Leach JL, et al. *Am J Clin Nutr* 1995 Jun;61(6):1224-30. 4. Tressler RL, et al. *Nutrition* 2003 Jan;10(1):16-20.

www.AbbottNutrition.ca
©Abbott Laboratories, Limited
Printed in Canada
COF/46A08-March 2008

